



Address: State Tower, 1055 Silom Road,
Bangrak, Bangkok 10500, Thailand

Tel: +66 (0) 2624 9999

Fax: +66 (0) 2624 9998

E-mail: information@lebua.com

Website: www.lebua.com

Company: lebua Hotels & Resorts Co., Ltd

President: Khun Rattawadee Bualert

Chief Executive Officer: Mr. Deepak Ohri



lebua at State Tower is an all-suite hotel with breathtaking views of Bangkok from every room. Everything about lebua spells exclusive, and luxury is a theme that runs throughout every suite and facility in the hotel.

The award-winning hotel is managed by lebua Hotels & Resorts Co., Ltd., who specializes in creating new concepts in luxury hospitality: hotels, resorts, and restaurants.

In addition to the Dome and lebua at State Tower, lebua Hotels & Resorts also manage one of the world's ultimate private luxury retreats, Lake Okareka Lodge by lebua, in Rotorua, New Zealand.



Location

lebuA at State Tower is located on the corner of Charoen Krung and Silom roads. The hotel is also just a 40-minute drive from Suvarnabhumi International Airport and a 10-minute walk from the BTS Sky Train's Saphan Taksin station. Just a short stroll away is the venerable Chao-Phraya River where shuttle ferries ply freely, creating a whole spectrum of activities along the riverside. Also close by, are popular shopping centers like Central and Robinson.

Partners

lebuA at State Tower is a member of Preferred Hotels® & Resorts. Preferred Hotels & Resorts is the ultimate luxury collection, featuring more than 750 exceptional hotels and resorts in the world's most desirable locations. A member of the Preferred Hotel Group™ family of brands, Preferred Hotels & Resorts'

legendary commitment to quality ensures an unparalleled guest experience. All Preferred Hotels & Resorts embrace the award-winning Standards of Excellence™, an extensive 1,600 item annual quality assurance program that has been honored with the "Best Practices Champion Award" by Cornell University. Please visit www.PreferredHotels.com

GDS CODES

online reservations:

- **Amadeus :** PH BKKLST
- **Apollo/Galileo :** PH 85338
- **Sabre/Abacus :** PH 70888
- **Worldspan :** PH BKKLS



Suite Descriptions

The graceful Thai culture and lifestyle are blended with Western design disciplines to create a resonant, yet restful effect that reverberates in every corner of lebuA at State Tower.

Each of the 358 rooms, ranging from 66 to 266 square meters, offer stunning vistas of the Chao Phraya River and the city skyline from balconies in every room, and come complete with kitchenettes, home entertainment centers, and Bvlgari amenities in all bathrooms.



One-bedroom Suite

One-bedroom suites are a spacious 66 sqm in size, and offer the privacy and comfort of a living area and bedroom, separable by a sliding partition. The beds are feather soft and there is ample room for work or relaxation in the living area. The well-appointed bathroom features a separate walk-in shower and bathtub.



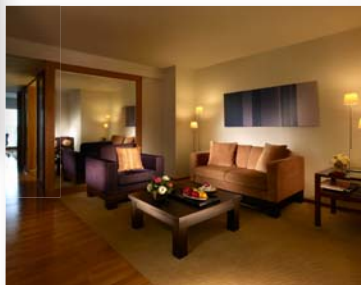
Two-bedroom Suite

Ranging from 176 – 186 sqm, the 2-bedroom suites are elegantly laid out to offer maximum utilization of space. A master bedroom with a king size bed and a guest bedroom with twin beds both include en-suite bathrooms and private balconies. A spacious living room with plush sofas and multiple balconies to enjoy finest panoramic view of the curve of Chao Phaya River and Bangkok City, a well-equipped open kitchen, and dining area, all add up for a pleasurable stay.



Three-bedroom Suite

The 266-sqm, 3-bedroom suites offer a large kitchen, a well-designed living area with hand knotted rugs, chic crystal chandeliers reflecting the warm colors of the room, and a large dining table comfortably accommodating up to ten persons. The master bedroom has an oversized king bed, with the two guest rooms featuring a double bed and twin beds respectively. Feel at home and enjoy stunning city and river views amid contemporary décor with soft furnishings and parquet floors.



Tower Club at lebuena

The newly launched Tower Club at lebuena provides guests with exclusive complimentary privileges on the penthouse floors (51st – 59th floors), including free mini-bar, additional amenities, access to the Tower Club Lounge, complimentary broadband internet access, and new LCD television monitors with interactive digital menus as well as complimentary video on demand.



Category	No. of bedrooms	Sqm.	View	Washer & Dryer	New Bvlgari & additional amenities	Mini-bar	Interactive LCD TV with video on demand	Access to Tower Club Lounge
Superior Suite	1	66	Partial City	x	x	√	x	x
Cityview Suite	1	66	City	x	x	√	x	x
Riverview Suite	1	66	River	x	x	√	x	x
2-bedroom Suite	2	176 - 186	City+River	Select units	x	√	x	x
3-bedroom Suite	3	226	City+River	Select units	x	√	x	x
Tower Club Cityview suite	1	66	City	x	√	Free	Free	√
Tower Club Riverview Suite	1	66	City+River	x	√	Free	Free	√
Tower Club Signature Suite	2	176 - 186	City+River	Select units	√	Free	Free	√
Tower Club Luxury Suite	2	176 - 186	River	Select units	√	Free	Free	√
Tower Club Iebua Suite	3	226	City+River	Select units	√	Free	Free	√



Suite Comforts & Amenities

- Bvlgari amenities
- Fully-equipped kitchenette (upon request)
- Washer and dryer (selected units)
- Iron and ironing board (upon request)
- Hair dryer
- Personal safe
- Telephone with voice mail function
- Home entertainment center with TV, DVD player and CD player
- Complimentary In-room broadband Internet access

Services for Guests

- Room service from The Dome Restaurant
- Private meals cooked in-suite by The Dome's chefs
- Non-smoking suites
- Concierge
- Café Mozu and Poolside Café
- Fitness Center
- Swimming pool
- Business Centre
- Meeting rooms
- Daily local newspapers
- Message, mail and postal services
- Housekeeping services
- Launderette
- Doctor on call (24-hrs.)
- Social activities
- Limousines
- Wheelchairs on request



Business Centre (51st Floor) **Complete contemporary convenience**

The Business Centre is designed to satisfy every conceivable requirement for doing business in the 21st century. Fully-equipped with office facilities, broadband Internet connectivity, personalized secretarial and administrative support, message/mail/postal services, and meeting rooms of varying sizes, the Business Center has everything to assist you in your pursuit of success.

Open daily:

From 7.00 am. to 10.00 pm. on weekdays

From 9.00 am. to 6.00 pm. on weekends and public holidays.

Fitness Center (Mezzanine level) **Fits all needs**

The Fitness Center includes a gymnasium, sauna cum steam room, swimming pool, Jacuzzi and massage rooms.

The gym is fully equipped with a full range of exercise equipment including cardiovascular and resistance machines as well as free weights and dumbbells. The swimming pool is 20 x 48 meters in length and 1.55 meters in depth with Jacuzzi jet nozzles throughout. Lockers and towels are provided for pool guests.

Open daily:

From 6:00 am. to 10:00 pm.





Function Rooms

lebuA offers a wide range of fully-serviced conference rooms with up to 1,000 square meters of flexible space, with a capacity to hold up to 800 guests. The function rooms provide unique set up for weddings and private events, such as terraces and dramatic views of Bangkok City.

The Pundarika Grand Ballroom comprises of three spacious function rooms – **Angarika Ballroom, Padmini Ballroom and Pushkara Ballroom**, each of which range between 250 to 1,000 square meters, to meet diverse requirements.

Designs merge classic elements with traditional details and contemporary furniture. A blend of light and warm colour schemes with accents in champagne gold, deep purple and crystal whites lend grace and sophistication. A gigantic crystal chandelier takes center-stage at the atrium while winding staircases mirror the imperial grandeur of European palaces.

Pundarika Grand Ballroom (Level 1 & 2 – Lower & Upper Floor)

One of the most unique hotel function rooms in the country, Pundarika Grand Ballroom brings an imperial quality to any event staged herein. The grandeur and ornate decor is the perfect backdrop for wedding receptions and gala dinners.

Capacity for Pundarika: Up to 400 for seated dinner; 800 for standing receptions.

Pushkara Ballroom (Level 1 – Lower Floor)

Intricate details have been integrated with excellence in mind. This versatile hall can be sub-divided into three smaller units – Mallika, Kamala, Nalini, each overlooking the glittering Chao Phraya river.

Capacity for Pushkara Ballroom: 150 for seated dinner; 250 for standing receptions.

Angarika Ballroom (Level2 – Upper Floor)

From a stunning chandelier taking center stage to charming old-world European elegance, everything about this function room is designed to dazzle.

Capacity for Angarika Ball room: 300 for seated dinner, 500 for standing receptions.

Aravinda room (Level2 – Upper Floor)

Aravinda room offers a feast for the eyes in many ways. Presenting the finest view of the Chao Phraya river, the beautifully done up, spacious room is ideal for exclusive wedding celebrations with a touch of romance.

Capacity for Aravinda room: 150 for seated dinner, 200 for standing receptions.

Padma Ballroom

Padma Ballroom is designed to adapt to diverse needs. The function room can be sub-divided into three smaller unites – Padmini, Padmana and Padmavati, to make it perfect for special seminars, private business meetings as well as large conferences.

Capacity for Padma Ballroom: 160 for seated dinner, 200 for standing receptions.





The State Room – Crowning events on the corporate stage

The State Room crowns The Dome at lebua on the 67th floor of State Tower. This exclusive function room with the circular ceiling gives maximum impact to any event through resonant acoustics and a spectacular 360 degree panoramic view. Simply put, any event in The State Room is destined to excel.

Capacity: 150 for seated dinner, 200 for standing receptions.

Function Rooms

	FUNCTION ROOMS	DIMENSIONS	AREA(SQ.M)	CEILING HEIGHT	THEATRE	CLASSROOM	U-SHAPE	COCKTAIL	BUFFET	BANQUET
	State Room 67th Floor		450	16 m	80	80	50	200	120	150
Level I (Lower Floor)	Mallika	9m x 13.5m	120	4 m	80	40	35	60-70	30-40	50
	Kamala	9m x 9m	80	4 m	50	20	20	40	30	40
	Nalini	9m x 9m	80	4 m	50	20	20	40	30	40
	Pushkara Ballroom	27m x 13.5m	525	4 m	220	120	70	250	150	150
Level II (Lower Floor)	Aravinda	22.5m x 13.5m	390	4 m	200	110	80	200	150	150
	Padmini	9m x 9m	75	4 m	40	25	20	30	30	30
	Padmana	4.5m x 7m	21	4 m	20	-	-	-	-	10
	Padmavati	13.5m x 9m	91	4 m	40	25	25	70	60	60
	Padma Ballroom	31.5m x 13.5m	245	4 m	200	70	50	200	150	160



The lebua Lounge:
Toast to the most premium drinks and teas

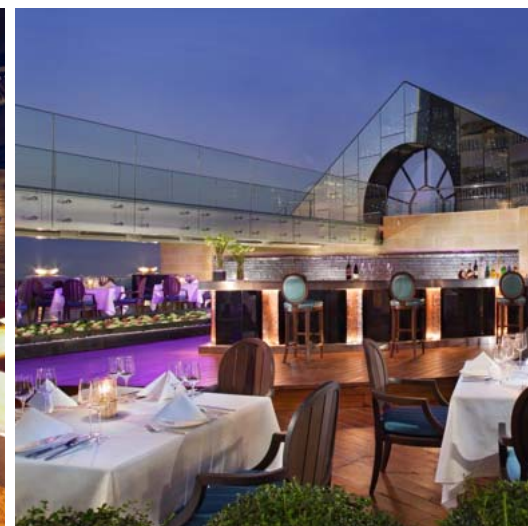
The lebua Lounge located adjacent to the hotel lobby is the perfect place for business or relaxation, featuring a wide selection of drinks, finest quality imported teas, wines, champagnes and cocktails. Every attention has been given to the fare on offer from the Traditional English High Tea served daily, to the teas themselves which hail from the renowned and award winning Harney & Sons from the U.S. A unique selection has been chosen for the hotel which compliments perfectly the handmade scones, sandwiches and delicate pastries.

Open daily:
 From 10.00 am. to 9.00 pm,
 High Tea from 3.00 pm. to 6.00 pm.

Café Mozu (M Floor):
Fine Lebanese, Indian Cuisine & Wood Fired Pizzas

Café Mozu on the Mozu floor by the poolside at lebua is a sophisticated fusion of Asian & Middle Eastern styles, all set to sweep you off your feet. Featuring the most authentic Indian and Lebanese cuisine and wood fired pizzas in a vibrant, fun-filled ambience; Café Mozu beckons you to an unending festivity with a fabulous selection of 99 shooters.

Open daily:
 From 06.00 a.m.– 1.00 a.m.
 a la carte menu is also available all day.



Sirocco (63rd Floor):
The finest Mediterranean cuisine
under the stars

Located in the middle of the sky at The Dome, Sirocco is the world's highest al fresco restaurant with a dramatic view of Bangkok. A spacious deck fans out to a multihued Sky Bar at one end. Sirocco presents the choicest Mediterranean fare with an exclusive selection of items. Live jazz music by international vocalists mingles with the breeze to provide the perfect backdrop for a truly memorable evening.

Open daily:
 From 6.00 pm. to 1.00 am.

Mezzaluna (65th Floor):
Best of Italian cuisine outside Italy

Mezzaluna reminds you of the half-moon winking through the night sky. Shaped like a crescent, the restaurant gives you a glittering view of the city. Authenticity is a veritable feature at the Mezzaluna. An open kitchen allows you to view awarded chefs whipping up traditional Italian fare. In the background, classic Italian songs take you right back to Italy. Dine and discover the true meaning of fulfillment.

Open daily:
 From 6.00 pm. to 1.00 am.

Distil Bar (64th Floor):
Drink in a breathtaking view
with every sip

Distil takes its name from Distillation, the process to purify a liquid to its most untainted drop. Every aspect of Distil reflects purity in this elementary form. Premium malt whiskies, vodkas and brandies are offered here along with the finest champagnes and wines from a walk-in cellar. A unique Oyster Bar compliments the drinks with imported delicacies. Authentic Cuban Cigars are yours to enjoy out in the open Lounge Terrace.

Open daily:
 From 5.00 pm. to 1.00 am.

Breeze (51st-52nd Floors):
Sumptuous Asian cuisine
with a breath of fresh air

Breeze brings with it a fresh perspective to Asian dining. The fine dining restaurant is a spacious two-storey introduction with delightful interiors, enlivened by private rooms. The dramatic décor continues with a landscaped terrace with stunning city and river views. Exotic cuisine complements the exquisite ambience.

Open daily:
 From 6.00 pm. to 1.00 am.



lebua at State Tower Awards

2009

- **Best Luxury City Hotel** by the World Luxury Hotel Awards 2009
- **World's Leading All-Suite Hotel** by World Luxury Hotel Awards, as voted by 183,000 travel tourism and hospitality professionals across the globe and the only win from Thailand in the 'World' award category
- **Best Luxury Hotel by 2009 Business Destinations' Travel Awards**, as voted of business travelers and travel presses by Business Destination, a magazine in association with American Express
- **Tablet Hotels Selection Award** by Tablet Hotel, the world's leading source for unique luxury and boutique hotels

2008

- **HAPA SIGNATURE LUXURY HOTEL** by The Hospitality Asia Platinum Awards 2008-2010
- **Top 5 Hotels in Asia and Best Hotel Bar** by HotelClub Awards 2008, winner among 120,000 nominations.
- **Overall Best Luxury Hotel Award and Best Luxury Suite Hotel** by the World Luxury Hotel Awards 2008
- **Asia's Leading Design Hotel** by World Travel Awards 2008
- **The Best Business Hotel in the World** by EUROPEANCEO Magazine, UK
- **Best Luxury Hotel** by Traveler's choice, TripAdvisor – ranked number 6 in Top 10 Best Luxury Hotels in Asia and number 47 in Top 100 Best Luxury Hotels worldwide
- **One of the World's Top 1% of Hotels**, Expedia Insiders' Select by Expedia.com

2007

- **Overall Best Hotel in Asia** by Business Asia Magazine in conjunction with CNBC (Circulated internationally)
- **Pure Decadence Listing of The 101 Best Suites in the World** by Elite Traveler Magazine, USA
- **The Best Business Hotel in Thailand** by Business Asia Magazine in conjunction with CNBC (Circulated internationally)
- **Best New Boutique Hotel in Bangkok** from Art of Travel – The Ultimate Luxury Culinary Travel Book, Netherlands (worldwide volume)
- **Expedia Insiders' Select** by Expedia.com

2006

- **Best New Hotel** by Business Asia Magazine in conjunction with CNBC
- **Pure Decadence Listing of The 101 Best Suites in the World** by Elite Traveler Magazine, USA